

**AUTOMATIC "C" SERIES
AUTOMATIC "C" SERIES
AUTOMATIC "C" SERIES
AUTOMATIC "C" SERIES
AUTOMATIC "C" SERIES**

instruction manual for

**AUTOMATIC "C" SERIES
SNACKS**



Automatic Products Company

75 WEST PLATO BLVD. • ST. PAUL, MINNESOTA 55107

	Page
WARRANTY	ii
SPECIFICATIONS	ii
CAPACITIES	1
INSTALLATION	2
COMPONENTS	5
SCHEMATIC	7
CLEANING	7
PARTS LIST	
Doors Assembly	8,9
Cabinet	10,11
Snack Shelf	12,13
Candy Shelf	14,15
Delivery Bin	16
Main Junction Box	17
Cabinet-Base	18, 19
Connectors	20

NOTICE

PLEASE READ

This machine is designed as a counter top vendor. For safety purposes the vendor should always be attached to the counter or placed and attached to the base cabinet that is built by Automatic Products Company. Hardware and instructions are provided with the base cabinet.

If a base cabinet is not being used the person installing the vendor should mount the vendor to the counter to secure it. You must provide your own hardware for this.

PLEASE READ

WARRANTY

The Automatic Products Company warrants this vendor, manufactured by it, to be free from defects in material or workmanship under normal use. Our obligation under this warranty is to the original purchaser only and is limited to making good at our factory any part or parts thereof which shall, within two (2) years after delivery of such product to the original purchaser, be returned to us or to our authorized dealer or distributor from whom purchased with all transportation charges prepaid to our factory, and which our examination shall disclose to our satisfaction to have been defective.

This warranty does not extend: 1: To any of our products which have been subjected to misuse, neglect, accident, incorrect wiring, improper installation, or to use in violation of instructions furnished by us; 2: To units which have been repaired or altered outside of our factory; 3: To cases where the serial number of the product has been removed, defaced or changed; 4: To electrical components, lamps, tubes or circuit breakers; 5: To accessories not of our own manufacture used with our products. Any part manufactured by Automatic Products Company, found by us to be defective within the

warranty period will be exchanged by Automatic Products Company or their authorized dealer or distributor without charge to the owner.

This warranty applied only to our products which are used within the United States of America, and is in lieu of all warranties expressed or implied, including, but not limited to implied warranties of merchantability or fitness for a particular purpose, and no representative or person is authorized to assume for us any other liability in connection with the sale of our products.

The Automatic Products Company reserves the right to make any changes or improvements in its products without notice and without obligation, and without being required to make corresponding changes or improvements in products theretofore manufactured or sold.

AUTOMATIC PRODUCTS COMPANY
75 West Plato Boulevard
St. Paul, Minnesota 55107

The "C" Series vending machines have been designed from superior engineering and quality throughout for the small-site market. The modular units will complement nearly any company's break area. The complete system takes less than 21 square feet of space.

It is recommended that this service manual be thoroughly read and instructions followed pertaining to all loading; servicing, parts etc. to achieve the most economical trouble-free operation of the "C" series vendor. (For indoor use only).

Should you have questions pertaining to this manual or the vendor, please contact your local Automatic Products Company distributor or write directly to:

**Service Manager
Automatic Products Company
75 West Plato Boulevard
St. Paul, Minnesota 55107**

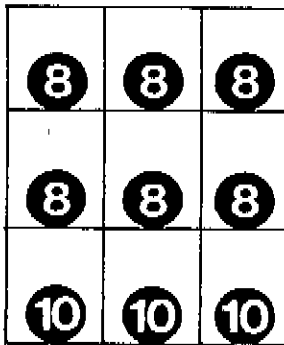
SPECIFICATIONS

HEIGHT — 35" WIDTH — 26-3/8" DEPTH — 26"
POWER REQUIREMENTS — 115 V., 60 HZ.
STANDBY AMPERES — .7 OPERATING AMPERES — 3

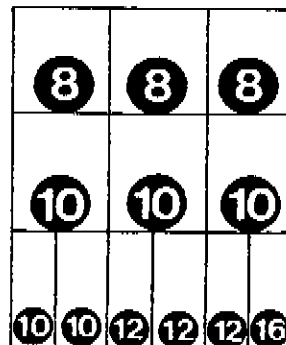
capacities

Unless otherwise specified machine will be shipped with spiral assortment shown below.

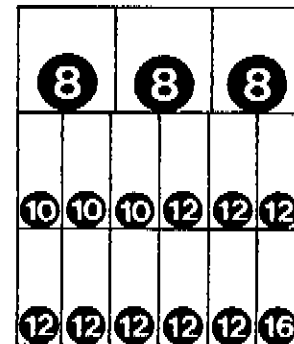
Figures in circles represent capacities in each spiral.



MODEL CS09
Capacity as shown: 78 units



MODEL CS12
Capacity as shown: 126 units



MODEL CS15
Capacity as shown: 166 units

PRODUCT SIZE CAPABILITY

Shelves	Height	Width of Snack Shelves Only	Width of Candy Shelves Only	Depth of Snack Spirals Only Choice:	Depth of Candy Spirals Only Choice:
Top - Snack	7-1/8	2-1/2 - 5-1/4			
Middle - Snack	6-3/4	2-1/2 - 5-1/4		6 Item Spiral 2-1/16	10 Item Spiral 1-5/16
Middle - Candy	6-3/4		1" - 2-1/4	8 Item Spiral 1-11/16	12 Item Spiral 1-1/16
Bottom - Snack	6-7/8	2-1/2 - 5-1/4		10 Item Spiral 1-5/16	16 Item Spiral 3/4
Bottom - Candy	6-7/8		1" - 2-1/4		20 Item Spiral 1/2

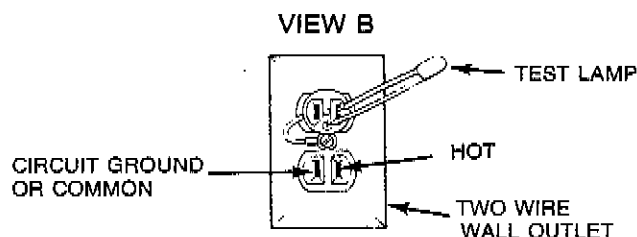
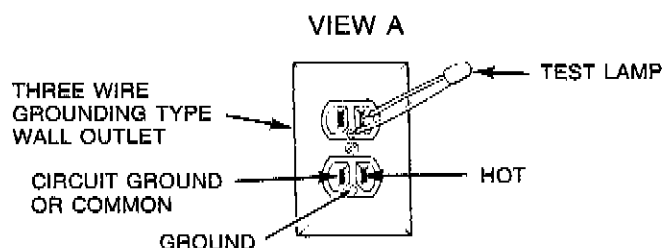
installation

1. **LEVELING THE MACHINE** on location is important for the proper function of the machine. The four leveling legs are the means of leveling the machine. After positioning the machine on the base cabinet or table top, level the machine in front and rear and right to left directions.
2. **THE MAIN POWER CORD** is taped in the back of the snack machine. Plug the 3 pin grounded line cord into a properly grounded 115V 60 HZ outlet only.

In order to comply with electrical safety regulations and Underwriters Laboratories requirements, all electrical equipment must be properly polarized and grounded. The machine is wired so that it is properly polarized in accordance with the electrical code. If the wall outlet is wired and grounded properly, then the vendor will connect properly.

Shown in View A & B are two properly grounded and polarized wall outlets. One is a three wire grounding type wall outlet (see View A) and one is a two wire wall outlet (see View B) with an adapter in place. To make a polarity check use a 115 volt neon test lamp as shown or a volt ohm meter. The hot side of the circuit should always be counterclockwise from the ground terminal (which should be at the bottom).

Should the polarity at the wall outlet show any way other than that shown below, the outlet should be rewired.



3. **LOADING SNACK SHELVES:** Open the door to full open position. Grasp the middle of a snack shelf and slightly lift it upward. Pull the shelf forward until it reaches its stop. The top two shelves tilt down to make loading easier. **Only one product shelf should be in the loading position at a time.** Begin loading with the top shelf. When returning a shelf make sure the shelf is in its full home or vend position. Loading soft items such as pastry, pies, etc., should be placed in the lowest snack shelf possible to prevent product damage.

IMPORTANT: Product must not be forced into the spiral spaces but should fit freely. If the product is too tight, use a larger pitch spiral. The bottom of the product should be placed on top of the spiral wire that rests on the shelf surface (see Figure 1). The width of the product must be greater than the diameter of the snack spiral. If it is smaller, the product may fall through when it is in the front, ready to vend position.

4. **REMOVAL OF SPIRAL:** Grasp the front of the spiral and turn it clockwise. Lift the spiral up and off of the spiral lock. When replacing a spiral attach it around the tab on the spiral lock and turn the spiral counterclockwise to lock it in place. Be sure the front end of the spiral is positioned properly (with the front end of the spiral pointing downward on the left side) (see Figure 2). The spiral lock is attached between the spiral retainer tabs. Give a light forward pull on front of the spiral to check if it is locked in place.

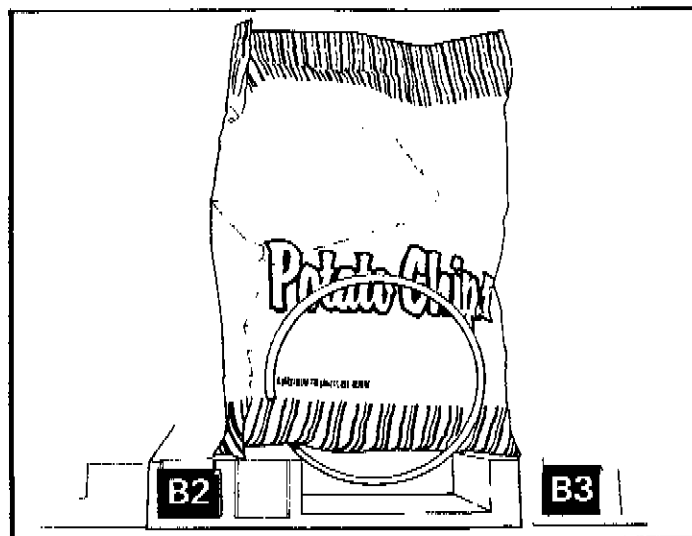


Figure 1. PLACEMENT OF PRODUCT ON MAIN PRODUCT SNACK SHELVES AND FRONT END POSITION OF SPIRAL.

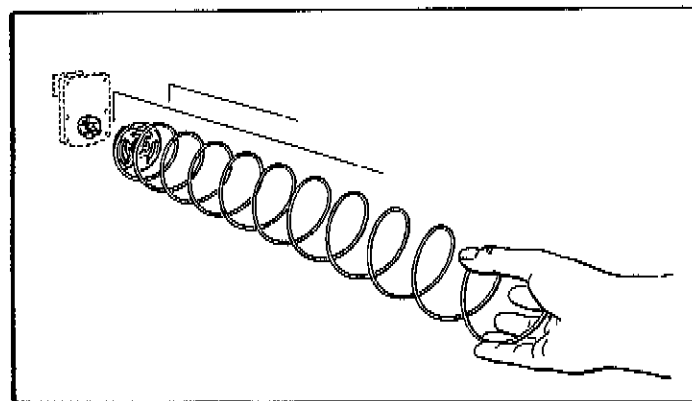


Figure 2. REMOVING AND INSTALLING SPIRAL.

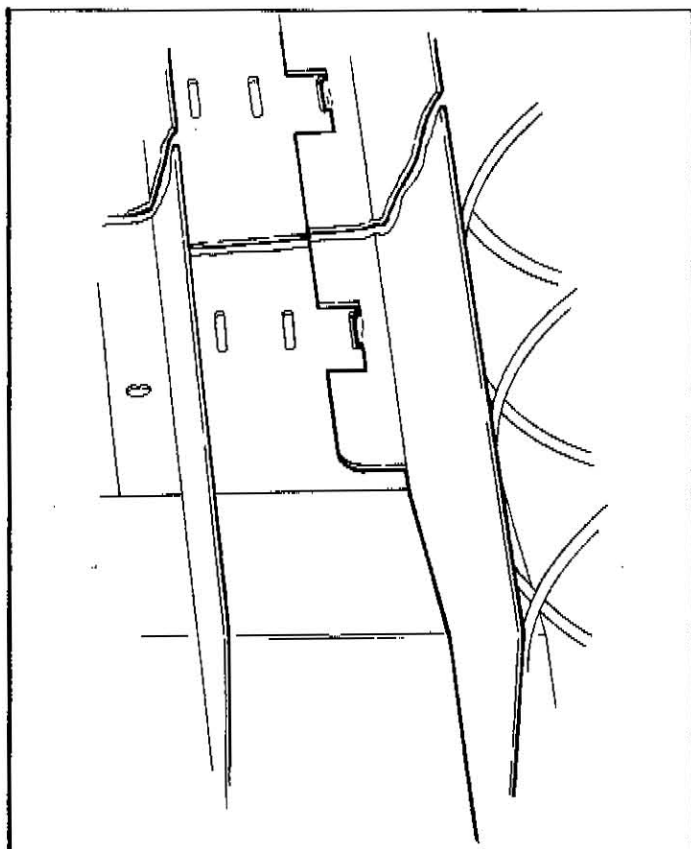


Figure 3. ALIGNMENT OF MOVEABLE PRODUCT SPACERS.

5. **PRODUCT SPACERS — 3 SELECTION SHELF:** A product spacer is used to reduce the width of the product area and should be used on any 3-selection snack shelf where the product width is 4½" or less. Spacers should fit within 1/8" of the product but should not fit tight against the product. There are three positions in each snack space where these spacers can be placed. To install the spacer, align the lock ears (on the lower edge of the spacer) with one of the three sets of slots (one front and one rear). (See Figure 3). Push the spacer to the rear to allow the ears to enter the slots, then allow the spacer to move forward. Be sure the ears are in the same set of slots, front and rear. (See Figure 3). Continue loading all spirals adjust with spacers where needed in the top shelf. Return the top shelf to the vended position and following this procedure load the remainder of the snack spiral shelves.

6. **LOADING MAIN PRODUCT CANDY SHELVES:** The 6-selection (candy type) shelves are loaded similar to the 3-selection shelves except that the bottom of the product sits on the shelf in front of the spiral wire (see Figure 4) that rests on the shelf. These products must also fit properly in the spiral space; do not force product into spiral.

These spirals are removed and installed the same as the large spiral (see Figure 2), except that the front end position is different (approximately 5 o'clock) (see

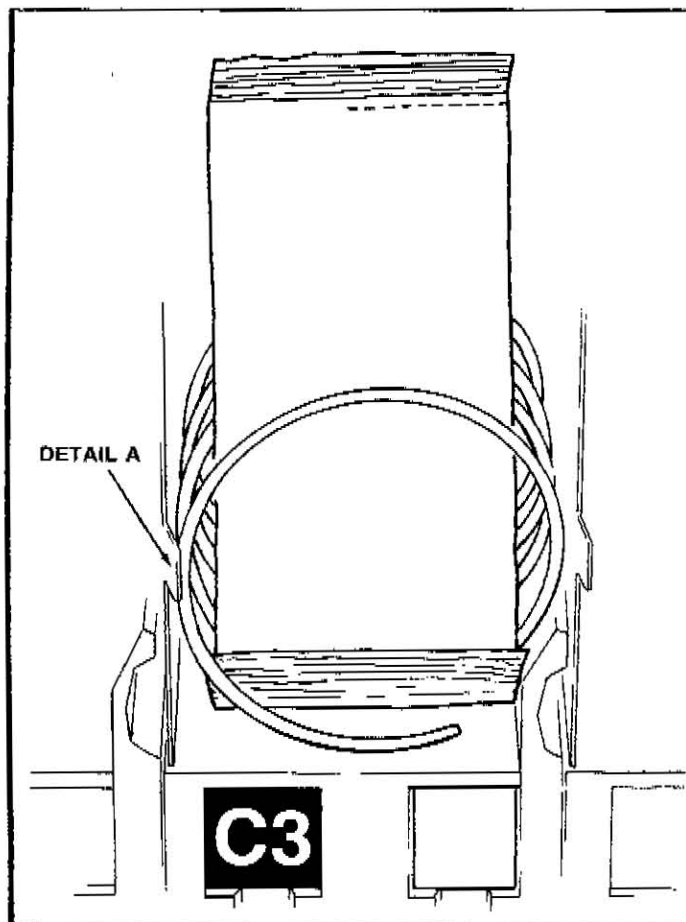


Figure 4. PLACEMENT OF PRODUCT ON MAIN PRODUCT CANDY SHELVES AND FRONT END POSITION OF SPIRAL.

Figure 4) and the front left side of the spiral must be behind the small tab located on the left side of the product space side wall (see Figure 4, Detail A).

7. **PRODUCT PUSHER:** The machine contains enough pushers for you to install a pusher on each candy spiral. This plastic part is designed to push the top of the product forward while it is vending, helping it fall from the shelf. It can also be used with products that have the wrapper end flap on the outside of the package. In this case, the pusher prevents these products from hanging on the spiral by spreading the flap. The pusher is installed approximately 210 degrees from the front end of the spiral with the tab extending forward (see Figure 5). Locate the pusher in its proper position, holding it against the spiral wire and push the semi-circular part around the spiral wire. Note: Not every selection spiral will need a product pusher. (Example — Box Items).

8. **BAGGED OR BOXED ITEMS** in the 6-selection shelves if not loaded properly could be a problem. The sealed edge of the bag may get under the spiral wire causing the product to hang up after it has been vended. It is recommended that the lower edge of these types of product be folded forward and up (see Figure 6) next to the product before inserting into the spiral space. It is

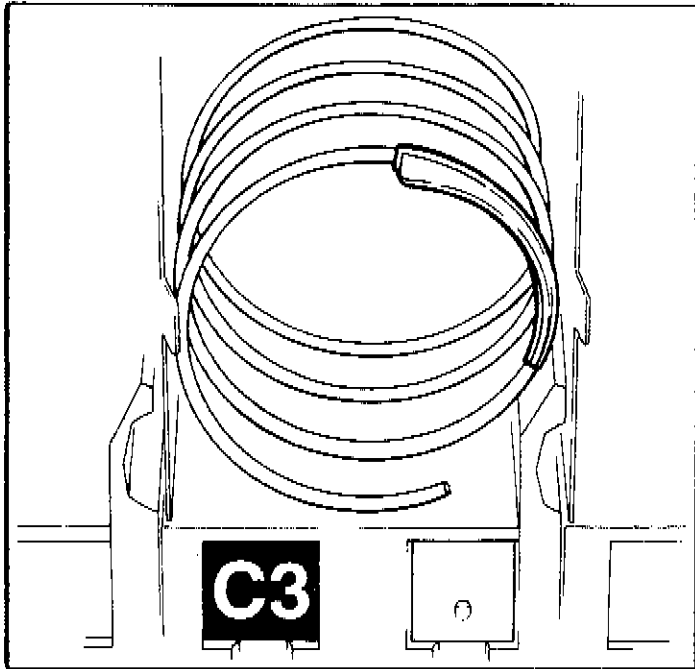


Figure 5. LOCATION OF PRODUCT PUSHER ON SPIRAL.

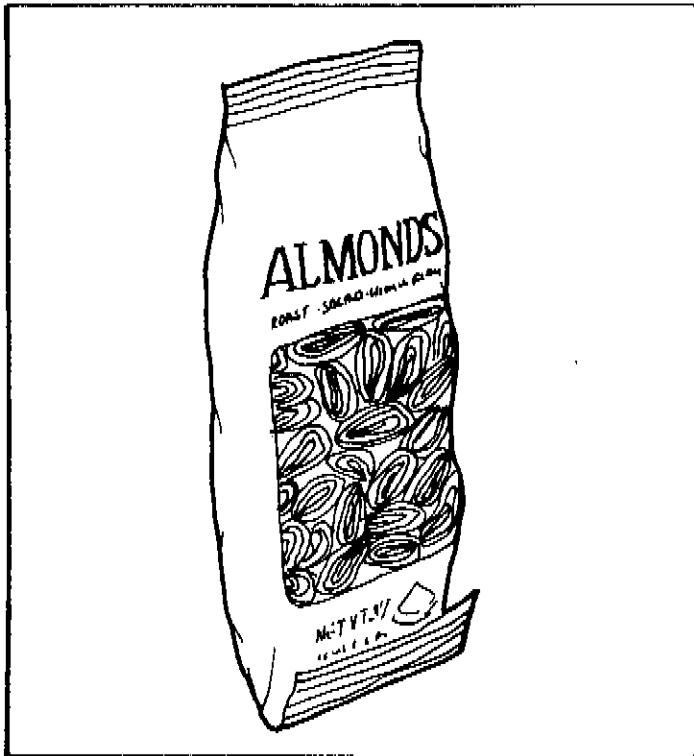


Figure 6. FOLD BAGGED ITEMS BOTTOM EDGE FORWARD AND UP.

also recommended to use a 10 count spiral for bagged items because of the product settling to the bottom of the package.

9. **CIGARETTE VENDING:** Cigarettes can be vended from the candy shelves using the (10 capacity) spiral for the soft pack regular, king, 100mm or 120mm packs or (box) packs.
10. **LOCK PRODUCT SHELVES.** After all the product has been loaded be sure all shelves are returned to their vend position behind the front roller guide.
11. **INSTALL PROPER PRICE TABS** into price tab holder for each selection in the main product area. (See Figure 7).

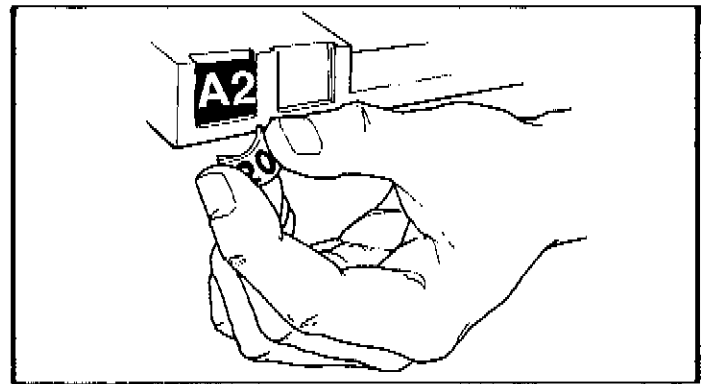


Figure 7. INSTALLING PRICE TABS.

INTRODUCTION

The Snackshop "C" series vending machines are designed for the small-site market. The snack machine contains a coin mechanism (24 volt) and selection control unit. These components will enable the machine to function properly and give you an option to add a cold can drink or currency validator for a complete system. This can be done by just plugging them into the back of the snack cabinet.

1. POWER SUPPLY

The 115 VAC power cord from the wall outlet comes into the machine and plugs into the left side of the main interlock box located on the bottom hinge side of the machine. The other connections on the interlock box are for the transformer, lights, and power plug to the control board. All these connections are different so you cannot plug them in wrong. The 115 VAC cord goes to the toggle switch inside the box and then to the transformer which supplies two output voltages 28 VAC (11 & 12) and 10.6 VAC (13 & 14). These voltages then pass through their circuit breakers and up to the control board. The 28 VAC and 10.6 VAC goes to the top left plug on the main control board.

The voltage used on the vend motors is 24 VDC. Do not test them with AC voltage and be sure polarity is correct or damage will result.

When removing any component be sure the power is off. Take special care when removing the control board. Do not lay the board on a metal surface.

2. CHANGER

The "C" series snack machine can use either a Mars (TRC-6010), (TRC-6010C) or a Coinco (9302-L) changer. Both changers are 24 volt. The changer may be mounted on the bracket provided on the door. Remove the changer hold down screw which was installed in this bracket for shipment. Hang the changer on the shoulder studs provided and replace the hold down screw to lock the changer in place. Be sure the changer cord is clear of the coin return lever operation.

3. MODE SWITCHES

The mode switches are located on the control board (see Figure 8). They allow for control of coin payout and setting of prices. The two mode switches used for coin payout are 10¢ (top) and 5¢ (middle). Pushing each individual switch allows payout from the changer of that coin. Pushing both mode switches at the same time allow payout of 25¢.

4. SELECTION PANEL

The selection panel (Figure 9) on the Snackshop "C" series incorporates the use of a self enclosed membrane switch panel. This eliminates the need for individual switches and wiring. The membrane switch panel is housed in a plastic housing. The housing also contains the instruction and digital display glass. Included on the instruction glass are three messages for customer instruction when the machine can not complete a vend for an item selected. If this condition occurs, an L.E.D. next to the proper instruction will flash until the customer takes further action.

5. VEND MOTORS

The "C" series snack machine incorporates the use of a high RPM-DC motor. The snack and candy motors are the same and may be interchanged. Due to the new design, the vend motor may no longer be homed by hand. **DO NOT TRY TO TURN THE SPIRALS BY HAND. DAMAGE TO THE MOTOR WILL RESULT.** It is also important to check polarity before applying current to the motor. Two diodes and a capacitor are used to prevent circuit feedback and may have to be checked when trouble shooting motor problems.

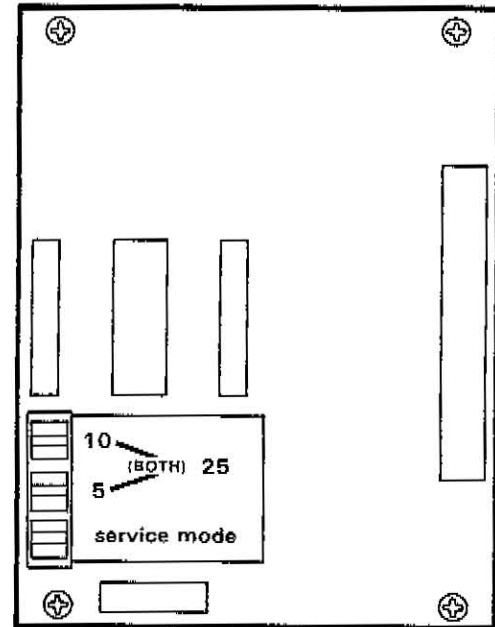


Figure 8. MODE SWITCHES.

6. PRICE CHECKING

Price checking is done through the selection panel in conjunction with the mode switch button on the control board. The L.E.D. on the selection panel will always display a ".00" credit.

A. To check prices for each selection simply press the selection letter (which will appear on the L.E.D. panel) and then press the number. The price for this selection will also appear on the display.

7. PRICE SETTING

To set up prices in the machine you will have to first press the service mode button (see Figure 8).

A. Press the selection letter (B) and the number (2). The price for that selection will be lit on the control board.

B. To **increase** that selection price push #8. The L.E.D. will then increase in increments of 5¢.

C. To **decrease** that selection price push #7. The L.E.D. will then decrease in increments of 5¢.

D. After pricing the selection press the mode switch a second time to return the machine to the operate condition. **NOTE:** After a 20-30 second delay it will automatically go into the operate condition.

8. TEST VEND OPERATION

To set a selection for a test vend the mode switch on the control board must be pressed.

- A. Press the #6 button on the selection panel and the L.E.D. will show three lines (— — —).
- B. Enter the selection to be tested. (Example: C3). As soon as this is done that selection will cycle once. Making a selection with a defective motor or a selection not in the machine that selection will be ignored.
- C. Press the mode switch button on the control board to put the machine back into operation.

9. LIGHTING SYSTEM

There is only one fluorescent lamp in the Snack Machine. The lamp is located in the top of the door, and lights the main product area. The starter is located on the changer mounting bracket. The ballast for the circuit is located on the main interlock box.

10. MAIN PRODUCT SHELVES

There are three main product shelves per machine, each containing either three or six selections. Each selection has its own motor mounted to the back of the shelf. Every shelf has its own harness and plug for connecting to the remainder of the circuit through the cabinet receptacle, located in the left rear of the cabinet. The motors are the same on either type shelf. It is possible in the Snack Machine to exchange a three selection shelf with a six selection shelf or visa versa. The top shelf is wired only for a snack shelf.

NOTE: When exchanging the shelves, you will not need any parts, but you will have to reprogram the machines for prices and selections.

REMOVAL OF PRODUCT SHELF:

- A. Lift up and pull the shelf to its loading position.
- B. Grasp shelf in front and rear center. Lift front of shelf up above horizontal and pull shelf forward while lifting.
- C. To install shelf, reverse above procedure.

11. DELIVERY BIN

This is located below the display window on the door and is mechanically operated.

REMOVAL OF DELIVERY BIN: Remove inner product deflector by sliding up through the notches on the bin back. Remove the two delivery bin anchor straps from the door. Remove the two screws holding the left side bracket of the delivery bin to the door. Using the bottom guide holes of the delivery bin remove two more screws. Lift the bin up and off of the lip of the door.

REPLACEMENT OF DELIVERY BIN: Locate the two lips on the front of the door. Slide the delivery bin onto it. Align the two delivery bin anchor straps with their respective holes. Replace the two screws on the left side bracket. Replace the last two screws using the lower delivery bin guide holes. Reinstall product deflector.

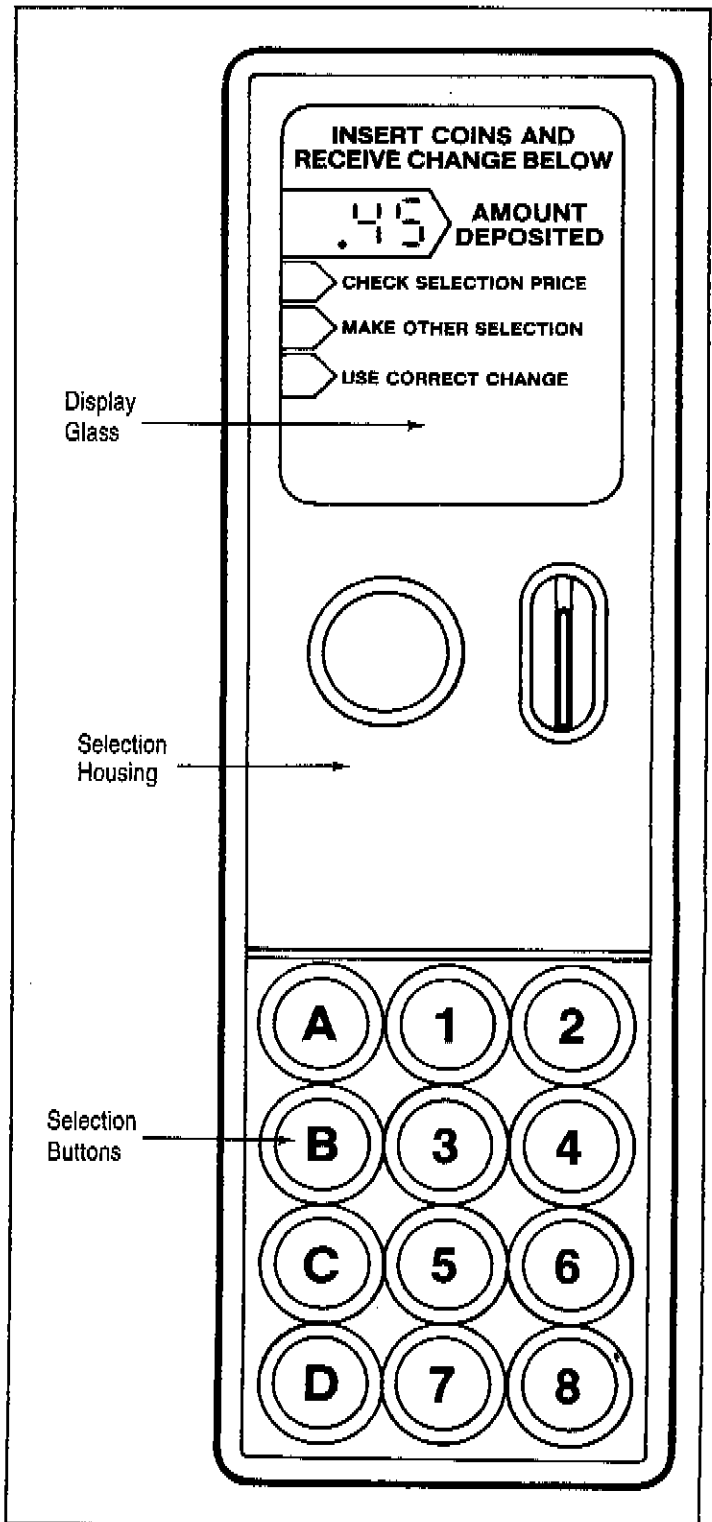
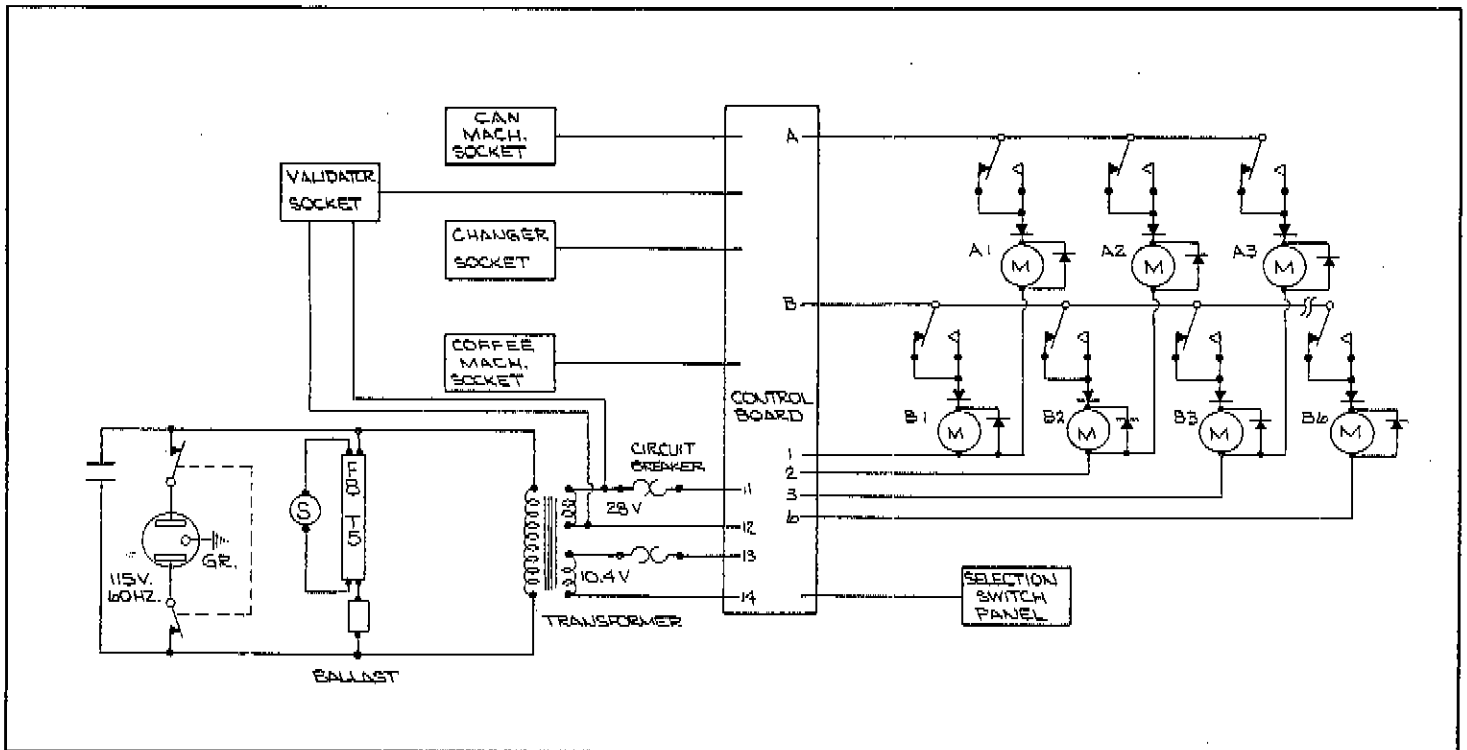


Figure 9. SELECTION PANEL



cleaning

The Snackshop "C" series will do the best merchandising job for you if it is kept clean. The display window can be cleaned with any good glass cleaner. The exterior and interior surfaces should be cleaned with warm water and mild detergent. Rinse thoroughly and dry all surfaces.

CAUTION:

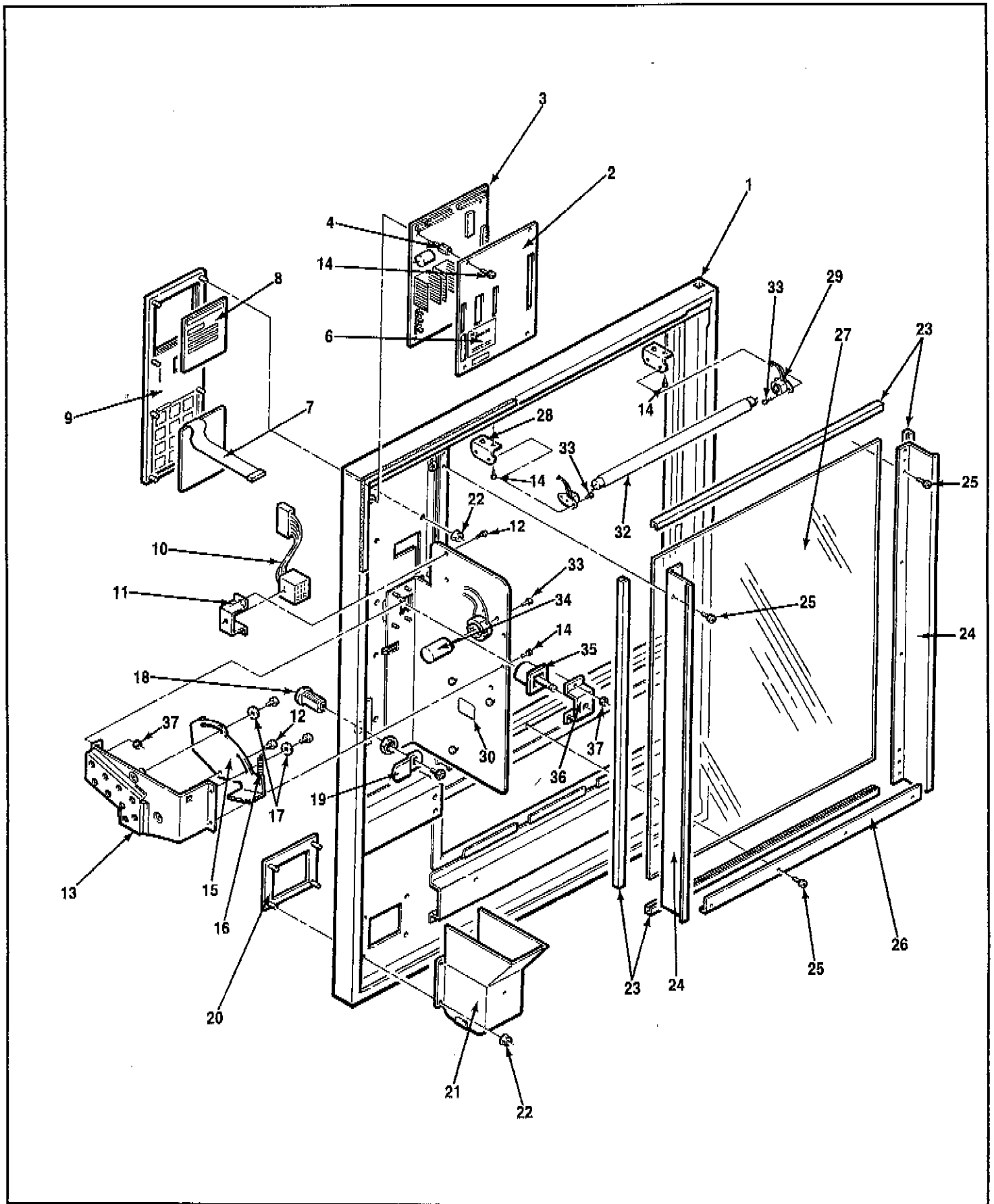
Do not use any cleaners containing silicon as this could cause electrical failures.

The main product shelves can be best cleaned with the spirals and product spacers removed. Refer to page for removal of spirals and page for removal of the product spacer. We do have cleaner available that we feel is

superior to any other cleaners we have tried in the past. The cleaner (Part #460386) comes in a 20 ounce aerosol can and is used by spraying a good coating over the surface to be cleaned, then letting the cleaner set for 3 to 3½ minutes and wiping it off. After the shelf has been cleaned a neutralizer (Part #460387) should be sprayed on and wiped off. The neutralizer will have to be transferred to a smaller bottle with a sprayer. There are openings in each end of the delivery bin at the back for cleaning out dirt.

Clean the acceptor on the changer frequently as accumulated dirt in this area can cause coins to hang or not be accepted. Follow recommended cleaning procedures as described by the manufacturer.

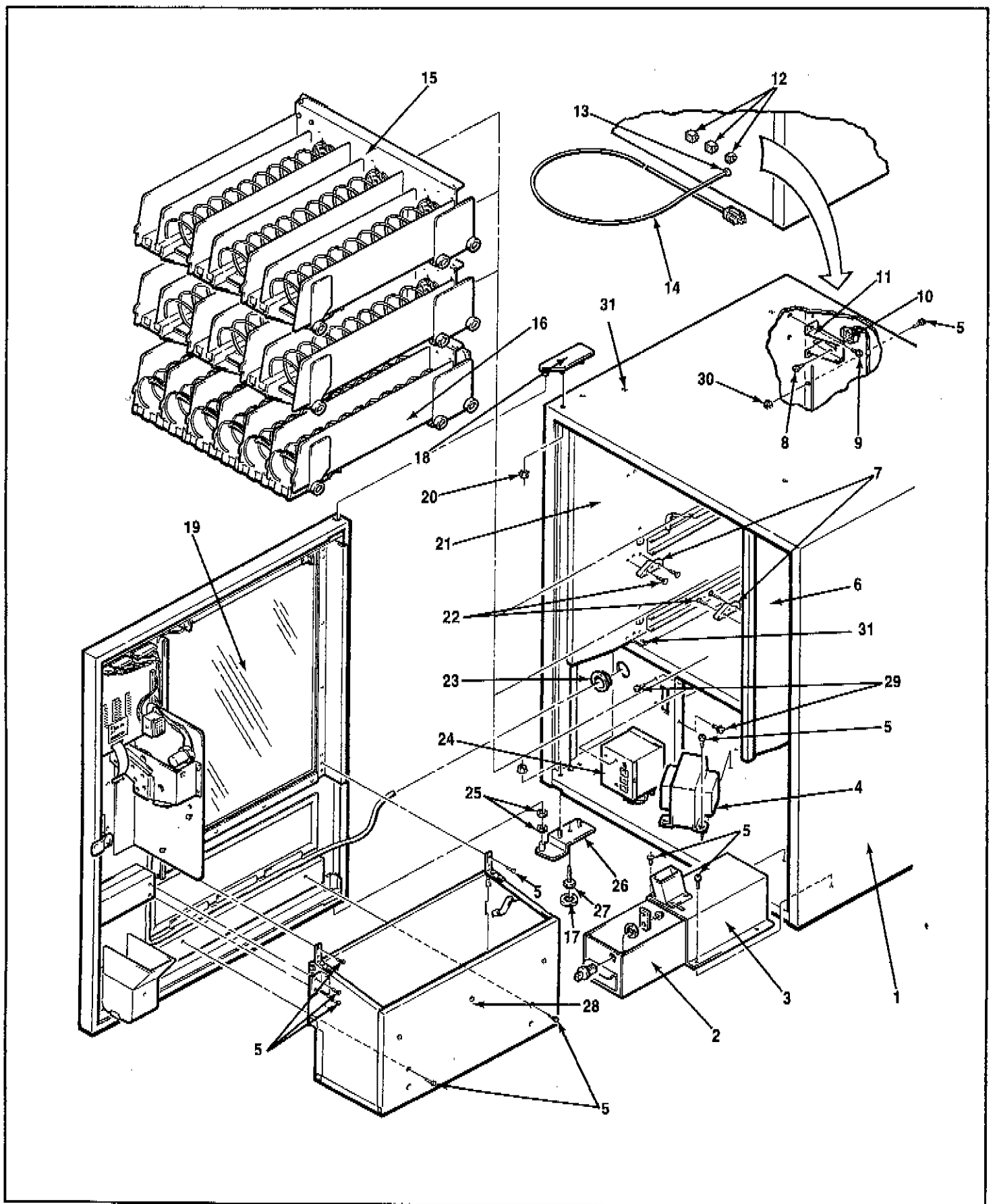
door assembly



door assembly

Item No.	Part No.	Description
1	600481	Door Only.
2	201641	Control Board Cover.
3	360124	Control Board.
4	300182	Control Board Spacer.
6	460397	Decal, Control Board Instruction.
7	750130	Selector Switch and Plate.
8	440299	Instruction Glass.
9	660357	Assembly Complete. Selection Trim.
	440291	Selection Trim Only.
10	680341	Harness, Changer Interconnect.
11	201636	Changer Socket Bracket.
12	276-8R6	Screw, Pan Hd. Phillips Self-Tap (8-32 x 3/8).
13	660374	Assembly Complete. Door Coin Chute.
	600485	Door Coin Chute Only.
14	276-8R4	Screw, Pan Hd. Phillips Self-Tap (8-32 x 1/4).
15	201640	Rejector Lever.
16	400034	Return Spring
17	420010-9	Washer.
18	420159	Door Lock w/2 Keys.

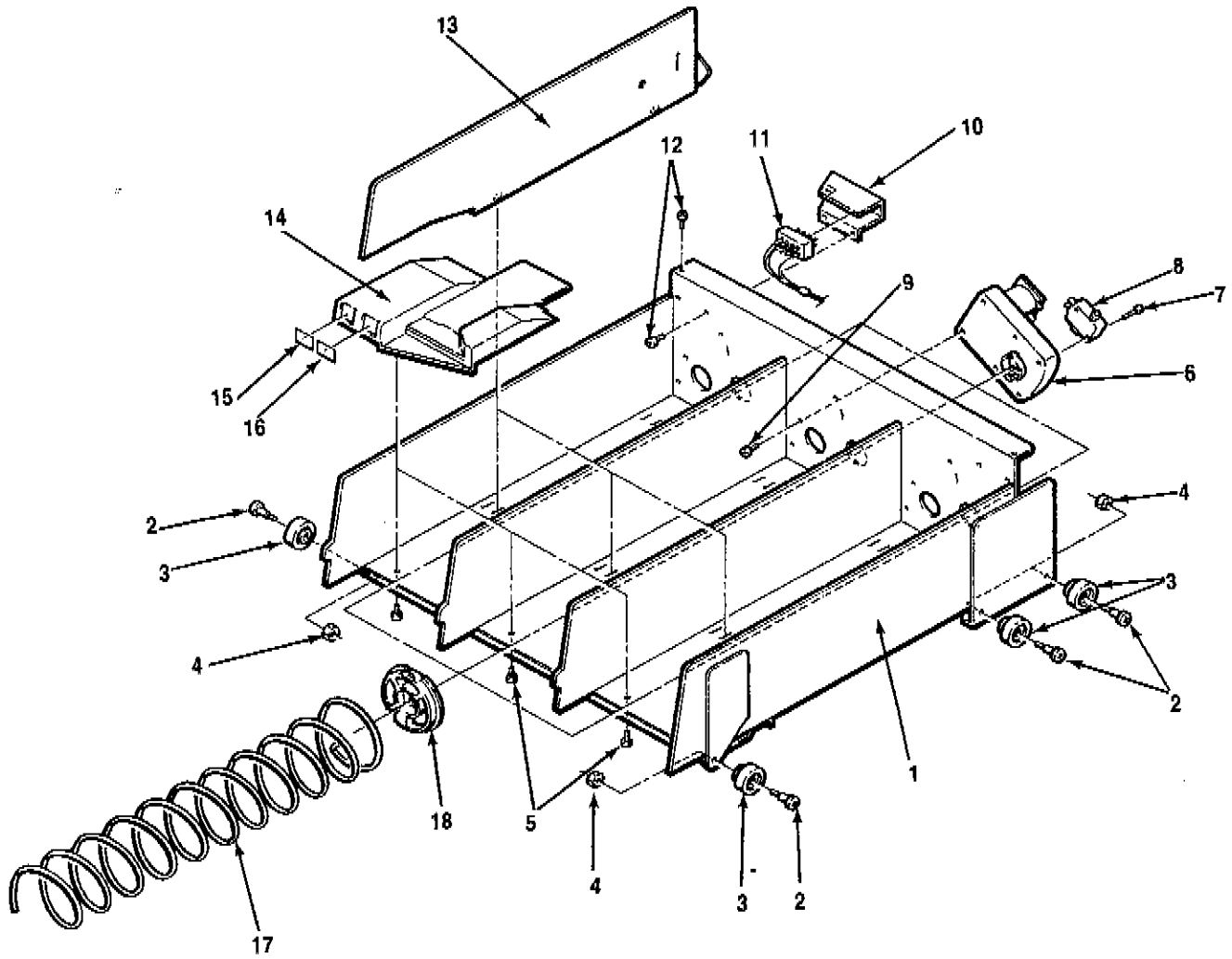
Item No.	Part No.	Description
19	201632	Door Lock Cam.
20	440296	Trim Coin Return.
21	201156-1	Coin Cup Door (not shown). (Painted).
	600474	Coin Cup
22	18443	Palnut (1/4).
23	460336	Window Gasket (order # of inches needed).
24	201633	Window Side Shield.
25	200-6R6	Screw Rd. Hd. Phillips Type A (6-18 x 3/8).
26	201639	Clamp Lower Window.
27	440298	Window (20-7/8 x 16-13/32 x 1/8).
28	201605	Lamp Socket Brkt.
29	660344	Harness, Fluorescent Lamp.
30	460418	Changer Caution Decal.
31	460041-1	Insulation Foam (1/4 x 1/4 x 60).
32	380022-3	Fluorescent Lamp (F8-T5).
33	276-4R7	Screw Pn. Hd. Type 23 (4-40 x 7/16).
34	380023-3	Starter (FS-5).
35	440289	Coin Return Button.
36	201634	Coin Return Button Support.
37	404-8	Hex Nut (8-32).



Item No.	Part No.	Description
1	750131	Cabinet Only.
2	600467	Cash Box.
	750097	Lock and Cam w/2 Keys.
	420020	Lock Only w/2 Keys.
	420069-1	Lock Cam Only.
3	640136	Cash Box Mounting Bracket w/Chute.
4	360083	Transformer
5	276-8R6	Screw, Pan Hd. Phillips Self-Tap (#8 x 3/8).
6	660348	Assembly Complete Right Side Panel.
	600468	Right Side Panel Only.
7	440130	Front Roller Guide.
8	420089	Screw, Flat Hd. Phillips 100° (6-32 x 1/2).
9	276-8R4	Screw, Pan Hd. Phillips Self-Tap (8-32 x 1/4).
10	680358	Harness Complete. Back Cabinet to Door.
11	600470	Shelf Socket.
12	-	See Page #18 for Individual Connectors.
13	380052	Bushing, Strain Relief.

Item No.	Part No.	Description
14	360086	Harness, Line Cord Set. 3 Conductor
15		See Page #13 for Itemized Parts. Pastry Shelf.
16		See Page #15 for Itemized Parts. Candy Shelf.
17	420177	Leg Leveler Cap. Plastic
18	640141	Assembly, Upper Hinge
19		See Page #9 for Itemized Parts. Door-Inside.
20	438-4	Nut, Keps (1/4-20).
21	660349	Assembly Complete. Left Side Panel.
	600469	Left Side Panel Only.
22	276-8R12	Screw, Pan Hd. Phillips Self-Tap (8-32 x 3/4).
23	420040-4	Snap Bushing (1 5/16 diameter).
24		See Page #17 for Itemized Parts. Main Junction Box.
25	420010-17	Washer.
26	640142	Assembly, Lower Hinge.
27	300174	Leg Leveler.
28		See Page #16 for Itemized Parts. Delivery Bin.
29	276-84B	Screw Pan Hd. Sems #23 8 x 1/4.
30	404-8	Nut, #8.
31	420076-4	Pop Rivet (1/2 diameter steel)

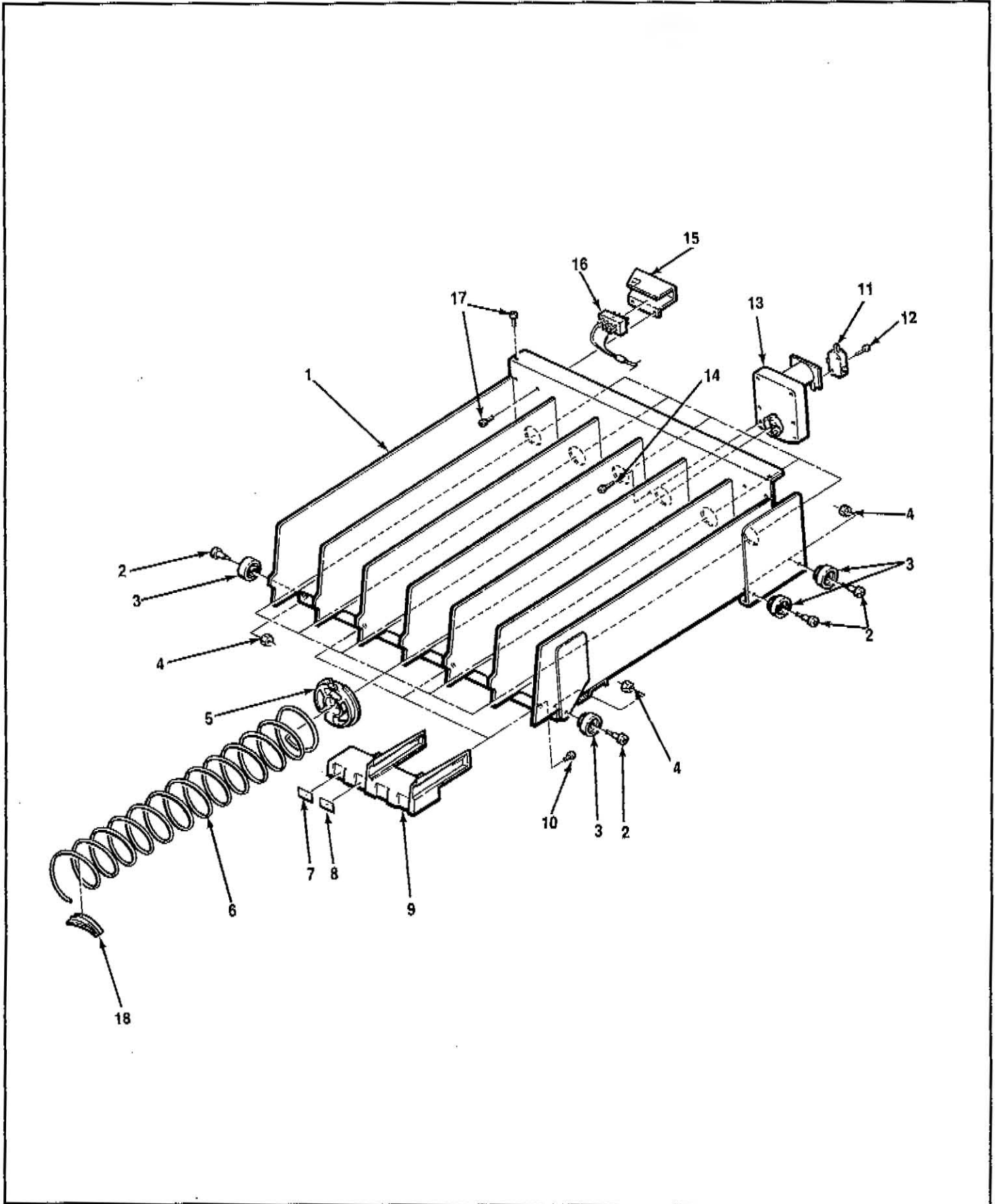
snack shelf



Item No.	Part No.	Description
1	750132	Assembly Complete. Snack Shelf w/o Spirals.
	600471	Snack Shelf Only.
2	300137	Screw Shelf Roller.
3	440277	Shelf Roller.
4	437-41	Keps Nut (1/4-28).
5	305-8R6	Screw Pan Hd. Phillips Plastite (8-16 x 3/8).
6	360117	Vend Motor Complete.
7	216-4-12	Screw Pan Hd. Type AB (4-24 x 5/8).
8	380070	Switch Only.
9	305-7R8	Screw Pan Hd. Phillips Plastite (#7 x 1/2).
10	201571	Shelf Plug Bracket.
11	680334	Harness Complete. Pastry Shelf.
12	276-8R4	Screw Pan Hd. Phillips Self-Tap (8-32 x 1/4).
13	640101-1	Spacer Snack Shelf.
14	440285	Price and Selection Tab Holder.
15	460398	Item Tabs.
16	460347	Price Tabs. Assorted 10¢-\$1.50.
	460347-1	Price Tabs. All 30¢-40¢.
	460347-2	Price Tabs. All 40¢-45¢.
	460347-3	Price Tabs. All 50¢-55¢.

Item No.	Part No.	Description
	460347-4	Price Tabs. All 60¢-65¢.
	460347-5	Price Tabs. All 70¢-75¢.
	460347-6	Price Tabs. All 80¢-85¢.
	460347-7	Price Tabs. All 90¢-95¢.
	460347-8	Price Tabs. All \$1.00-\$1.05.
	460347-9	Price Tabs. All \$1.10-\$1.15.
	460347-10	Price Tabs. All \$1.20-\$1.25.
	460347-11	Price Tabs. All \$1.30-\$1.35.
	460347-12	Price Tabs. All \$1.40-\$1.45.
	460347-13	Price Tabs. All \$1.50-\$1.55.
	460347-14	Price Tabs. All \$1.60-\$1.65.
	460347-15	Price Tabs. All \$1.70-\$1.75.
	460347-16	Price Tabs. All \$1.80-\$1.85.
	460347-17	Price Tabs. All \$1.90-\$1.95.
	460347-18	Price Tabs. All \$2.00-\$2.05.
17	400124	Snack Spiral. 6 Space.
	400125	Snack Spiral. 8 Space.
	400126	Snack Sprial. 10 Space.
18	440287	Spiral Lock.

candy shelf



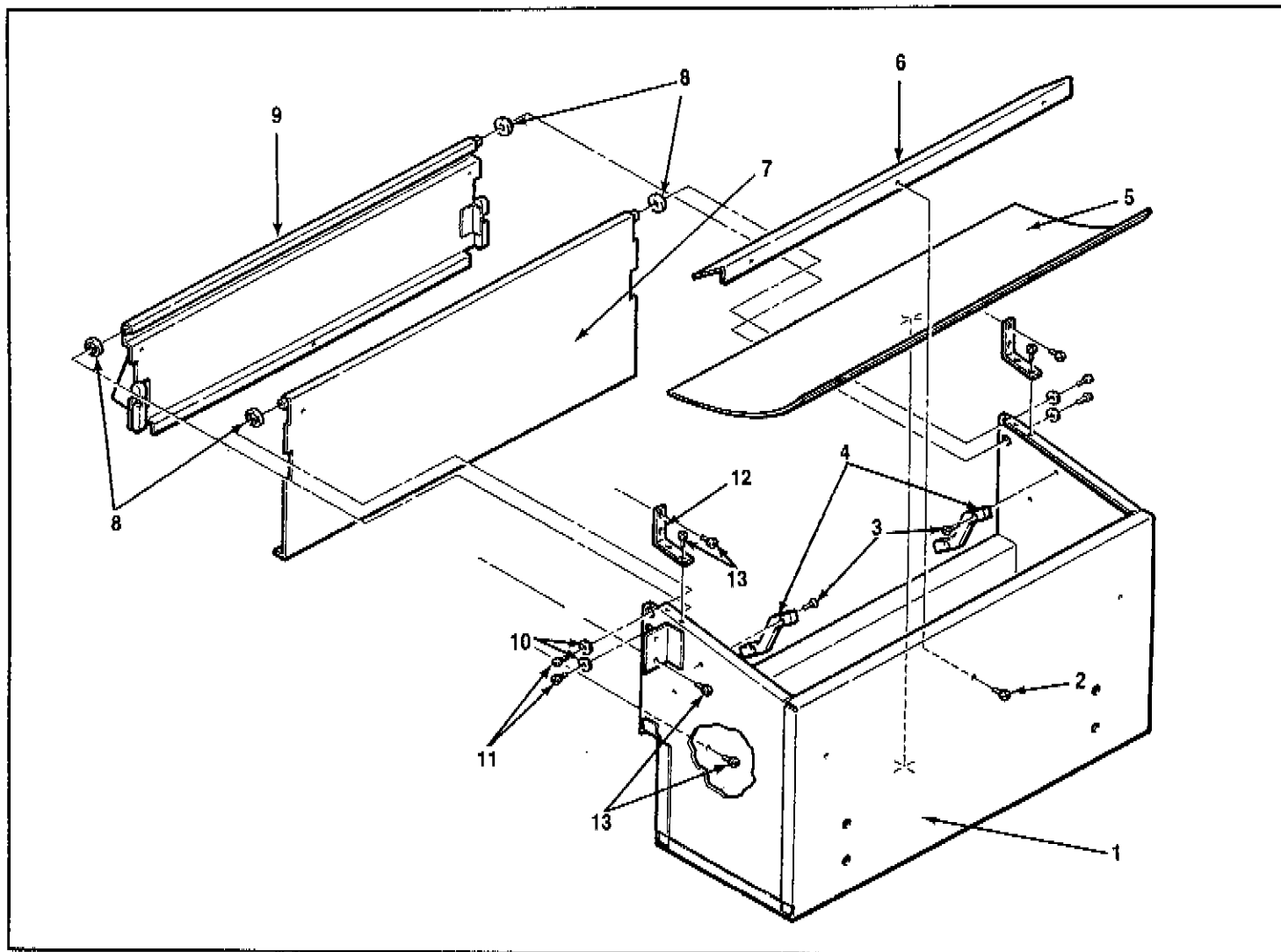
Item No.	Part No.	Description
1	750133	Assembly Complete. Candy Shelf w/o Spirals.
	600472	Candy Shelf Only.
2	300137	Screw, Shelf Roller.
3	440277	Shelf Roller.
4	437-41	Keps Nut (1/4 x28).
5	440287	Spiral Lock.
6	400116	Candy Spiral. 8 Space.
	400117	Candy Spiral. 10 Space.
	400118	Candy Spiral. 12 Space.
	400119	Candy Spiral. 16 Space.
	400134	Candy Spiral. 20 Space.
7	460398	Item Tabs.
8	460347	Price Tabs. Assorted 10¢-\$1.50.
	460347-1	Price Tabs. All 30¢-35¢.
	460347-2	Price Tabs. All 40¢-45¢.
	460347-3	Price Tabs. All 50¢-60¢.
	460347-4	Price Tabs. All 60¢-65¢.
	460347-5	Price Tabs. All 70¢-75¢.
	460347-6	Price Tabs. All 80¢-85¢.

Item No.	Part No.	Description
	460347-7	Price Tabs. All 90¢-95¢.
	460347-8	Price Tabs. All \$1.00-\$1.05.
	460347-9	Price Tabs. All \$1.10-\$1.15.
	460347-10	Price Tabs. All \$1.20-\$1.25.
	460347-11	Price Tabs. All \$1.30-\$1.35.
	460347-12	Price Tabs. All \$1.40-\$1.45.
	460347-13	Price Tabs. All \$1.50-\$1.55.
	460347-14	Price Tabs. All \$1.60-\$1.65.
	460347-15	price Tabs. All \$1.70-\$1.75.
	460347-16	Price Tabs. All \$1.80-\$1.85.
	460347-17	Price Tabs. All \$1.90-\$1.95.
	460347-18	Price Tabs. All \$2.00-\$2.05.
9	440262	Price and Selection Tab Holder.
10	305-8R6	Screw Pan Hd. Phillips Plastite (8-16 x 3/8).
11	380070	Switch.
12	216-4-12	Screw Pan Hd. Type AB (4-24 x 5/8).
13	360117	Vend Motor Complete.
14	305-7R8	Screw Pan Hd. Phillips Plastite (#7 x 1/2).
15	201571	Shelf Plug Bracket.
16	680335	Harness Complete. Candy Shelf.
17	276-8R4	Screw Pan Hd. Phillips Self-Tap (8-32 x 1/4).
18	440141	Candy Product Pusher.

delivery bin

Item No.	Part No.	Description
1	660352 600473	Assembly Complete. Delivery Bin. Delivery Bin Only.
2	276-8R4	Screw, Pan Hd. Phillips Self-Tap (8-32 x 1/4).
3	262-8R8	Screw, Flat Hd. Phillips Type 23 (8-32 x 1/2).
4	440295	Delivery Bin Door Cam.
5	201635	Delivery Bin Product Deflector.
6	201580	Rear Bin Barrier.

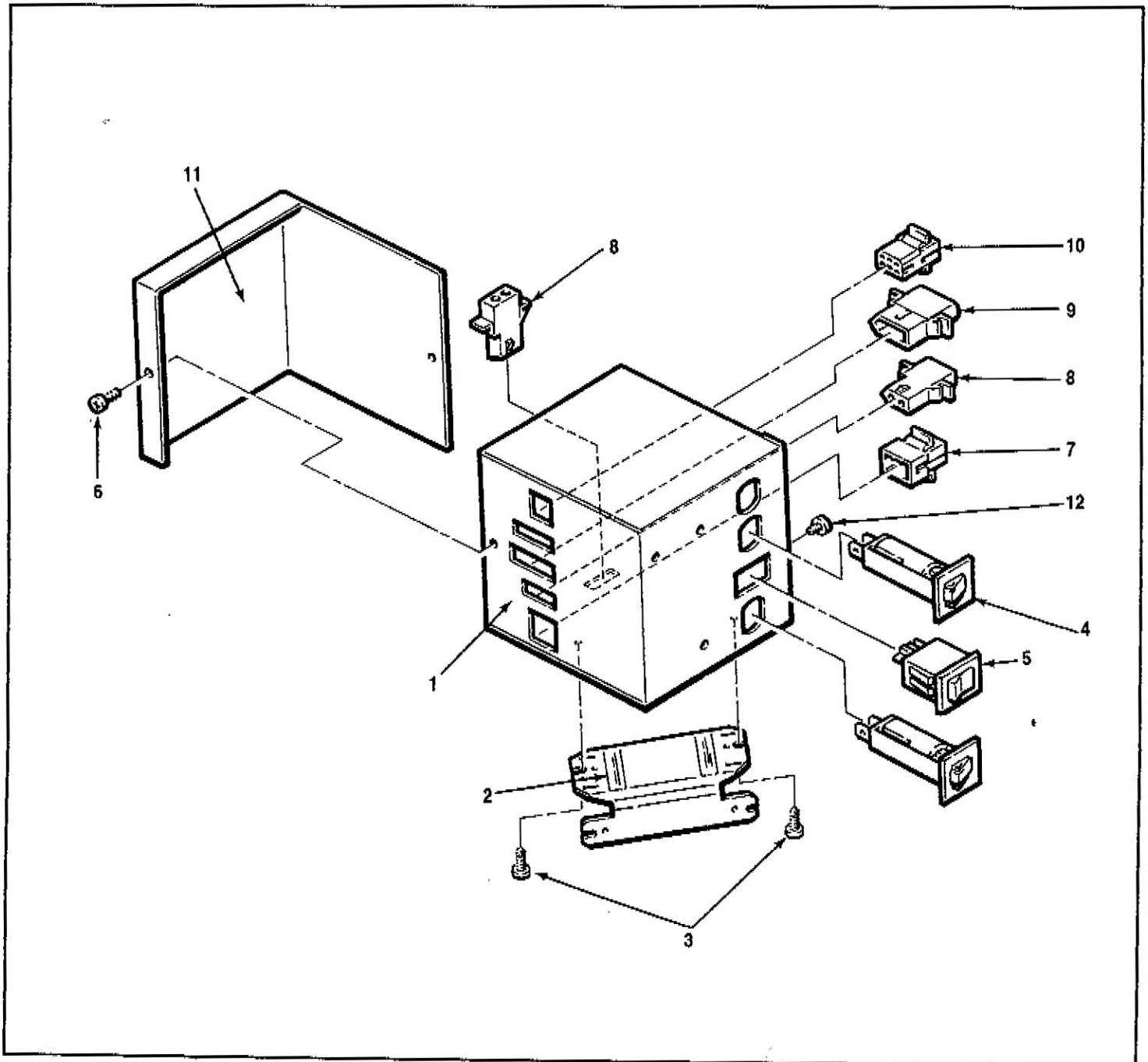
Item No.	Part No.	Description
7	201581	Inner Door.
8	440129	Door Bearing.
9	640138	Complete Delivery Push Door.
10	420010-9	Washer.
11	276-8R8	Screw Pan Hd. Phillips Self-Tap (8-32 x 1/2).
12	201638	Delivery Bin Anchor Strap.
13	276-8R6	Screw, Pan Hd. Phillips Self-Tap (8-32 x 3/8).



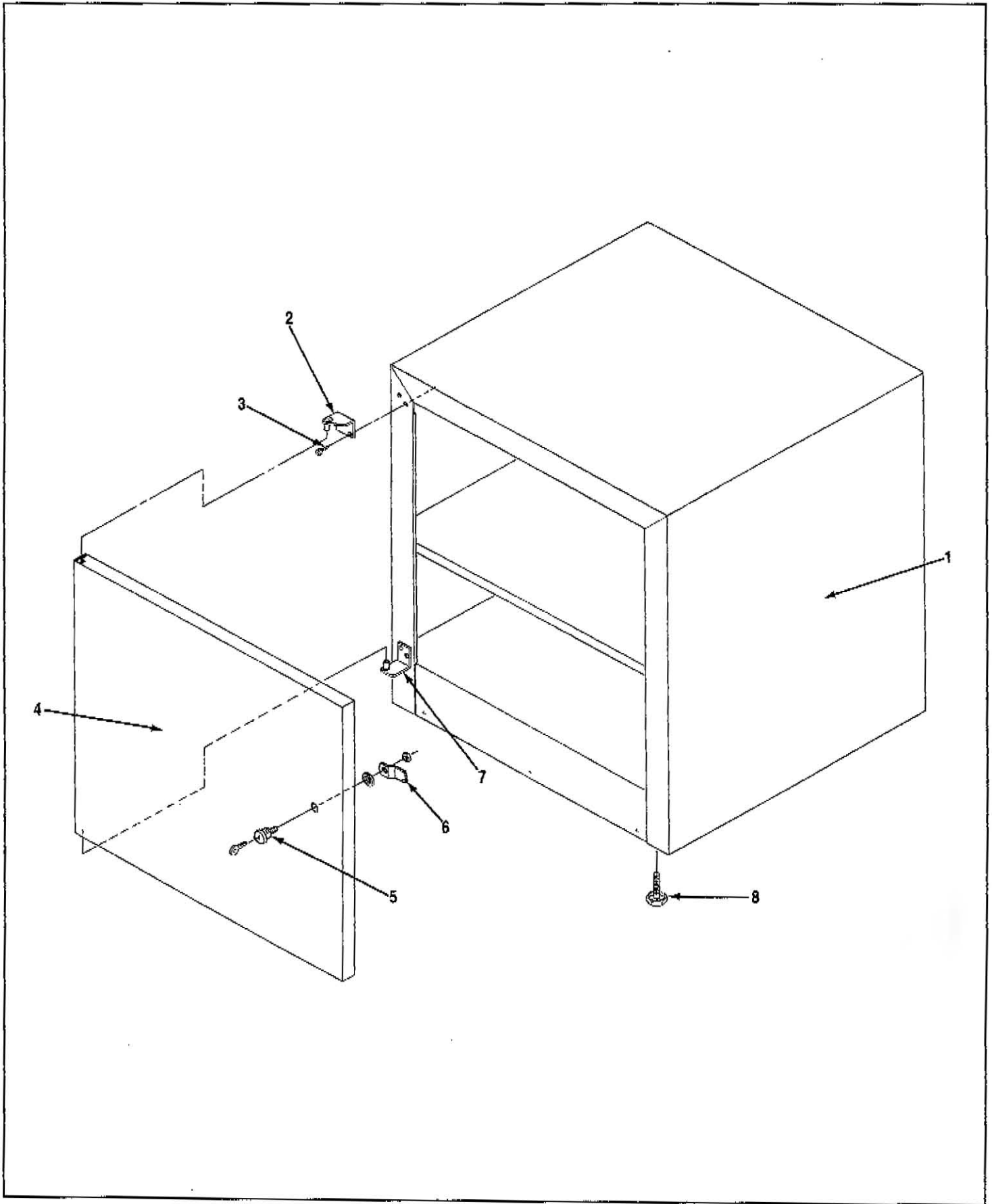
main junction box

Item No.	Part No.	Description
1	680360 201153	Assembly Complete. Main Junction Box. Box Only.
2	680278-4	Ballast Assembly Complete.
3	276-8R4B	Screw, Pan Hd. Phillips Sems. (8-32 x 1/4).
4	380241	Circuit Breaker. 3 Amp.
5	380243	Toggle Switch

Item No.	Part No.	Description
6	276-6R4	Screw, Pan Hd. Phillips Self-Tap (6-32 x 1/4).
7	380106	Molex Plug. 6 Pin.
8	380189	Molex Receptacle. 2 Pin.
9	380034	Molex Plug. 3 Pin.
10	380107	Molex Receptacle. 6 Pin.
11	201189	Cover Ballast and Switch Bracket.
12	200-6R6	Screw, Rd. Hd. Phillips (6-18 x 3/8).



cabinet-base



Item No.	Part No.	Description
1	600493	Assembly, Cabinet Base.
2	640146	Assembly, Upper Hinge.
3	262-6R5	Screw, Flat HD. Phillips #23 (6-32 x 5/16)
4	600495	Assembly, Cabinet Base Door.
5	420020	Ace Lock w/2 Keys.

Item No.	Part No.	Description
	420020-1	Ace Lock w/1 Key.
	420020-2	Ace Lock Only.
6	201718	Door Lock Cam Only.
7	640145	Assembly, Lower Hinge.
8	300174	Leg Leveler



CABLE TIE
460044



**FEMALE QUICK
DISCONNECT TERMINAL**
9/64-380213
3/16-380001
1/4-380003



**FEMALE PLUG
TERMINAL**
LARGE-380004
SMALL-380129



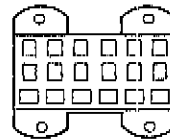
MALE PLUG TERMINAL
LARGE-380005
SMALL-380130



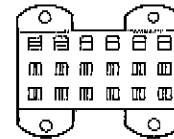
**MOLEX MALE
CONNECTOR PLUG**
3 PIN-380034
6 PIN-380106
9 PIN-380108
12 PIN-380110



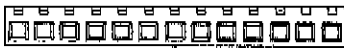
**MOLEX FEMALE
CONNECTOR RECEPTACLE**
2 PIN-380189
3 PIN-380035
6 PIN-380107
9 PIN-380109
12 PIN-380111



MAIN PRODUCT SHELF
380235



**MAIN PRODUCT SHELF
PLUG**
380247



**AMP IN-LINE
CONNECTOR**
5 PIN-380232-8
6 PIN-380232-9
11 PIN-380232-5
13 PIN-380232-2



**CHANGER
RECEPTACLE
AND COVER**
12 PIN-380200
COVER-380201

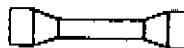


**WIRE
CONNECTOR**
380214



**CONNECTOR
POLARIZING KEY**
380233

**MOLEX CRIMP
TERMINAL**
380234



BUTT CONNECTOR
380021